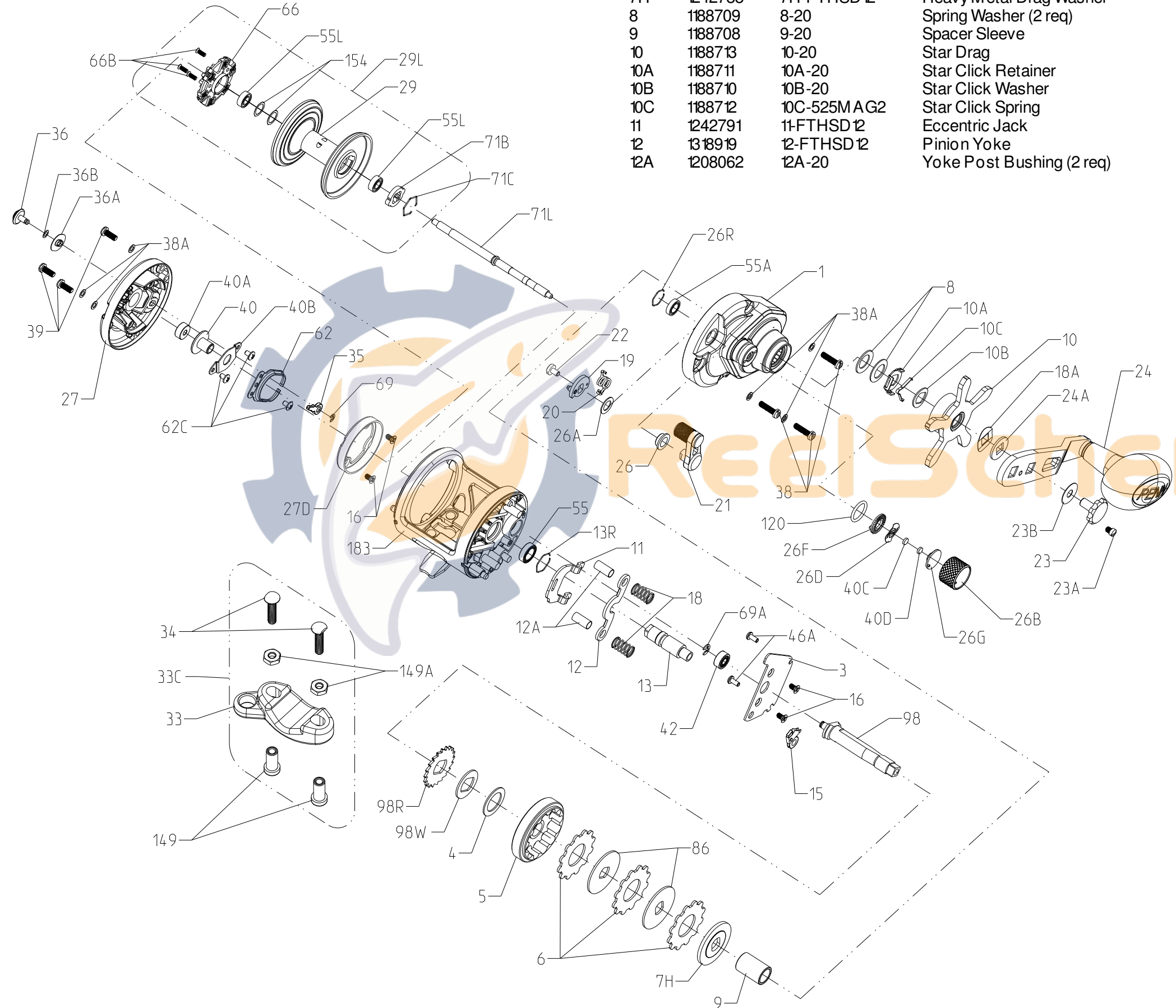




PARTS LIST FOR MODEL FATHOM SD 15
 REEL ASM NO. 1238443



| Key No. | Part No. | PENN Style No. | Description |
|---------|----------|----------------|---------------------------|
| 1 | 1242807 | 1-FTHSD15 | Right Side plate Assembly |
| 3 | 1242786 | 3-FTHSD12 | Bridge |
| 4 | 1180775 | 4-349 | Drag Washer |
| 5 | 1242789 | 5-FTHSD12 | Main Gear |
| 6 | 1237037 | 6-TRQ40 | Drag Washer Tab (3 req) |
| 7H | 1242788 | 7H-FTHSD12 | Heavy Metal Drag Washer |
| 8 | 1188709 | 8-20 | Spring Washer (2 req) |
| 9 | 1188708 | 9-20 | Spacer Sleeve |
| 10 | 1188713 | 10-20 | Star Drag |
| 10A | 1188711 | 10A-20 | Star Click Retainer |
| 10B | 1188710 | 10B-20 | Star Click Washer |
| 10C | 1188712 | 10C-525MAG2 | Star Click Spring |
| 11 | 1242791 | 11-FTHSD12 | Eccentric Jack |
| 12 | 1318919 | 12-FTHSD12 | Pinion Yoke |
| 12A | 1208062 | 12A-20 | Yoke Post Bushing (2 req) |

| Key No. | Part No. | PENN Style No. | Description |
|---------|----------|----------------|----------------------------|
| 13 | 1242790 | 13-FTHSD12 | Pinion |
| 13R | 1229364 | 13R-TRQ40 | Retaining Ring |
| 15 | 1188675 | 15-20 | Anti Reverse Dog |
| 16 | 1188686 | 16-20 | Bridge Screw (4 req) |
| 18 | 1188688 | 18-20 | Pinion Yoke Spring (2 req) |
| 18A | 1188714 | 18A-20 | Keyed Spring Washer |
| 19 | 1188691 | 19-20 | Eccentric |
| 20 | 1242806 | 20-FTHSD12 | Eccentric Spring |
| 21 | 1242830 | 21-FTHSD12 | Eccentric Lever |
| 22 | 1188690 | 22-20 | Eccentric Screw |
| 23 | 1208117 | 23-FTH20LW | Handle Screw |
| 23A | 1188717 | 23A-20 | Handle Lock Screw |
| 23B | 1207784 | 23B-20 | Handle Screw Washer |
| 24 | 1188716 | 24-20 | Handle Assembly |
| 24A | 1188715 | 24A-20 | Handle Thrust Washer |
| 26 | 1188692 | 26-20 | Bushing |
| 26A | 1242792 | 26A-FTHSD12 | Washer |
| 26B | 1208114 | 26B-FTH20LW | Spool Tension Control Cap |
| 26D | 1125769 | 26D-525MAG2 | Click Spring |
| 26F | 1125768 | 26F-525MAG2 | Click Plate A |
| 26G | 1125772 | 26G-525MAG2 | Click Plate B |
| 26R | 1214654 | 26R-525MAG2 | Ring Retaining |
| 27 | 1242808 | 27-FTHSD15 | Left Side Plate |
| 27D | 1242794 | 27D-FTHSD12 | Centrifugal Brake Path |
| 29 | 1242809 | 29-FTHSD15 | Spool |
| 29L | 1242836 | 29L-FTHSD15 | Spool Assembly |
| 33 | 1182754 | 33-113 | Rod Clamp |
| 33C | 1229936 | 33C-TRQ40 | Rod Clamp Kit |
| 34 | 1182788 | 34-45 | Screw (2 req) |
| 35 | 1188656 | 35-20 | Click Tongue |
| 36 | 1242796 | 36-FTHSD12 | Click Button |
| 36A | 1208113 | 36A-FTH20LW | Click Washer |
| 36B | 1188651 | 36B-20 | Click PVC Washer |
| 38 | 1188698 | 38-20 | Screw (3 req) |
| 38A | 1188649 | 38A-20 | Flat Washer (6 req) |
| 39 | 1188638 | 39-20 | Screw (3 req) |
| 40 | 1230004 | 40-TRQ40 | Bushing L.S. Spool |
| 40A | 1242804 | 40A-FTHSD12 | Bearing |
| 40B | 1242805 | 40B-FTHSD12 | Protector Bearing |
| 40C | 1208115 | 40C-525MAG2 | Washer, Metal Thrust |
| 40D | 1125771 | 40D-525MAG2 | Washer, Rubber Thrust |
| 42 | 1188661 | 40-20 | Ball Bearing |
| 46A | 1183585 | 46A-4300 | Screw (2 req) |
| 55 | 1214665 | 55-525MAG2 | Ball Bearing |
| 55A | 1214666 | 55A-525MAG2 | Ball Bearing 6x10x2.5 |
| 55L | 1192031 | 55L-965 | Ball Bearing (2 req) |
| 62 | 1188664 | 62-20 | Click Spring |
| 62C | 1188654 | 62C-20 | Screw (3 req) |
| 66 | 1242797 | 66-FTHSD12 | Centrifugal Brake |
| 66B | 1242798 | 66B-FTHSD12 | Screw (3 req) |
| 69 | 1188657 | 69-20 | Retainer |
| 69A | 1188659 | 69A-20 | Retainer |
| 71B | 1230226 | 71B-TRQ40 | Spool Driver |
| 71C | 1230227 | 71C-TRQ40 | Retaining Ring |
| 71L | 1242810 | 71L-FTHSD15 | Spool Shaft |
| 86 | 1184251 | 86-49L | Drag Washer Keyed (2 req) |
| 98 | 1188700 | 98-20 | Main Gear Shaft |
| 98R | 1242800 | 98R-FTHSD12 | Anti Reverse Ratchet |
| 98W | 1242801 | 98W-FTHSD12 | Ratchet Thrust Washer |
| 120 | 1184522 | 120113H | O-ring |
| 149 | 1184702 | 149-45 | Nut, Rod Clamp (2 req) |
| 149A | 1184706 | 149-200 | Nut, Hex (2 req) |
| 154 | 1242803 | 154-FTHSD12 | Shim (As Needed) |
| 183 | 1242811 | 183-FTHSD15 | Frame Assembly |